



ADMINISTRATIVE OFFICE:
2517 Bell Avenue
Dodge City, KS 67801
620.225.1140

now online

You can now make a tax-deductible donation to FUSE through our PayPal link on our website:
www.fusefoundation.net



Ideas for future events?

FUSE Foundation events are provided to fulfill our Mission -- **empowering through educational opportunities, support and social networking.** If you have event ideas, contact any Board Member. We'd love to hear your thoughts!

Can you help FUSE?

As you can see in this issue of FUSE FLASH, there are many ways that FUSE is helping young adults with neuromuscular disease. That help, though, can only happen with your support. FUSE has no paid staff, and minimal overhead, and we operate completely on your donations. Contributions are tax-deductible, and are REALLY, REALLY appreciated! Feel free to use the enclosed envelope or visit our website for a PAYPAL link! And THANK YOU for helping!

OUR MISSION

To facilitate an inter-dependent community of young adults with neuromuscular disease, that empowers through educational opportunities, support and social networking.

Upcoming Events

- 2018 FUSE RETREAT August 2-5, Camp Tawakoni (*Our 10th Anniversary!!!*)

BOARD OF DIRECTORS

Terri Reed, President
Chad Yeager, Vice President
Robert Neidhart, Treasurer
Tiffany Goracke, Secretary
Abby Bauer
Breanna McCully
Gabe Parham
Teri Russell

CONTACT US AT THE ADDRESS ABOVE WITH ANY QUESTIONS!

ISSUE

09

APRIL 2018

CHECK OUT
WHAT'S HAPPENING
WITH THE
FUSE FOUNDATION

FUSE Flash

Pipeliners Golf for FUSE!

Enterprise Products LLC in McPherson, Kansas sponsored the Annual Pipeliners Golf Tournament and selected the FUSE Foundation to be the beneficiary.



Retreat 2017

Where to start? So many great things at Retreat 2017! From the "regular" events to some awesome NEW things, and LOTS of new faces. The photos are the best way to share the fun, excitement, fun, happiness, fun, competitive spirit, fun and more fun! One of the largest group EVER gathered at Camp Tawakoni once again for four days and three nights of fun late last summer.

A huge THANK YOU to all the sponsors and donors who make this time possible, and to the volunteers

this issue

Retreat 2017 **P.1**

In Memory **P.2**

FUSE-giving **P.3**

Can you help? **P.4**



who give so selflessly of their time and energy. Without a doubt, this continues to be the "best week of the year" for many, many folks.



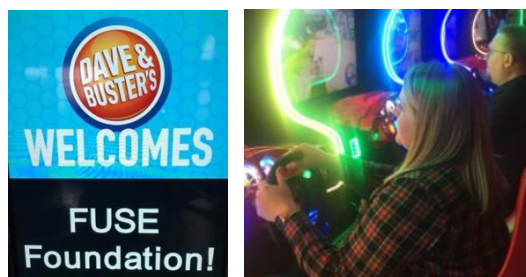
MORE FUN FROM RETREAT 2017



FUSE Educational Opportunity a Success!!

In February 2018 the FUSE Foundation folks in Wichita and Kansas City were connected via simulcast to hear an educational presentation regarding stem cell treatment, by Ryan Benton and one of his physicians, Dr. Van Strickland. Ryan has Duchenne Muscular Dystrophy, and has experienced amazing results from his adult stem cell injections over the past several years.

Following the presentation the groups each enjoyed some great food and fun time at The Alley in Wichita and Dave & Buster's in Kansas City. A huge thank you to Ryan and Dr. Van Strickland for sharing with our group!



TWO Great Organizations support FUSE!

November 2016 was a great month for the FUSE Foundation as we received notification of two grant awards.



The first was a \$5,000 award from the Community Foundation of Southwest Kansas towards the cost of our summer retreat at Camp Tawakoni for 2017. Since 2010, CFSWKS has

awarded grants to FUSE totaling \$ 28,500. This is truly remarkable support of our mission statement from southwest Kansas.

The second was a \$2,000 grant award received from the Williams Companies Homegrown Giving Program for general operating support. FUSE was nominated for this grant by Ronnie Reed of McPherson, KS where the Williams Companies have a large community presence. This is the second grant we have received from the Williams Companies since 2010.

Thank you to these two AWESOME organizations!



In Memory

We have lost a number of members of our FUSE family since our last newsletter. We are going to miss them terribly and will remember them always!

Dawn Allenbach

Josh Foster

Becky Fulcher

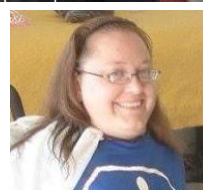
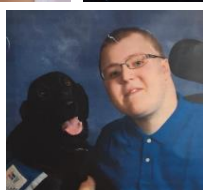
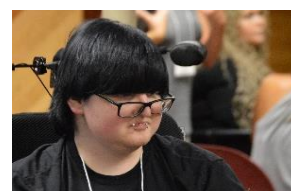
Remington Lanier

Alex O'Brien

Jerry "Granny" Underwood

Ky Wilder

Nancy Young



New ways to support FUSE while you shop!

You have two opportunities to support FUSE while you shop -- either for groceries, or online! We know not all options work for everyone, so we'll continue to look for a variety of ways you can help -- hope one will work for you!

FUSE participates in the **Amazon Smile** program, where we receive funding through purchases made on Amazon. If you're an Amazon customer and would like to participate, you'll need to sign up -- visit www.smile.amazon.com. Once you're signed up, just visit the same website, sign-in with your usual Amazon account, and FUSE will receive a percentage of your purchases. Don't forget, though -- you have to access Amazon through the special web address (with "smile" at the start). You'll find exactly the same cool stuff to buy, and FUSE gets a donation! Win-win! NOTE: You'll need to choose FUSE Foundation (Dodge City) as your Amazon Smile Charity.

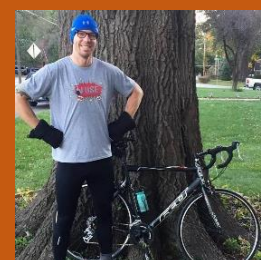
Also, FUSE is enrolled in the **Dillons Community Rewards** program. Once you sign up, FUSE will receive a small percentage each time you shop at Dillons. It's easy to sign up:

1. Visit www.dillons.com/communityrewards, then click "Enroll Now"
2. Sign in to your online account, or create an account
3. Find and select FUSE FOUNDATION, click "Save".

Every time you shop at Dillons, FUSE gets a small percentage -- it all adds up!



Grass-Roots Giving



We had a number of individuals that chose to dedicate their time, talents and birthdays to fundraising for FUSE over the last few years. Thank you!!

- **Ty Johnsrud** coordinated a Go-Fund-Me fundraiser in conjunction with his 200 mile bike-a-thon and raised \$2,720!
- **Phyllis Box** did the baking fundraiser for FUSE 2014, 2015 & 2016 -- raised \$6,306 total in those 3 years!
- The **Black family** raised \$2,100 in 2017 over the 4th of July. Dalton & crew were in the Hardner, Kansas parade in an ATV and then were in the local park doing face painting for donations during the community celebration.
- **Chelsea Buchanan** and **Breanna McCully** each "donated their birthday" (a Facebook fundraising option), which amounted to a total of \$2,190 for FUSE!

FUSE-giving 2017!

